



PMA™



PRIME™

# ISACo's Partnership with PMA Hits the Ground Running

As we had previously announced, on June 13, 2022, Illinois State Association of Counties (ISACo) and PMA Financial Network, LLC and PMA Securities, LLC (PMA) entered into a partnership to serve counties with a complete line of financial management and investment services.

ISACo met with PMA in late August and have hit the ground running with an exciting line-up of events and educational seminars that will be offered to ISACo Participants. **From economic updates to inflation discussions, to investing in the current rate environment, to bond proceeds management to debt restructuring, there will be something for everyone.** Be on the lookout for more information in the coming months and beyond!

Among the many benefits and opportunities this partnership brings to Illinois counties is the PMA/IPRIME (Illinois Public Reserves Investment Management Trust) fixed rate investment program. Highlights include:

- PMA's Fixed Rate Program to provide competitively bid investments
- IPRIME Investment Shares Class (ISC) Liquid Fund
- IPRIME Limited Term Duration (LTD) Mid-Term Fund
- ACH direct deposits of state and local revenues accepted
- Secure, online transactions and reporting with Government Portfolio System (GPS)
- Additional programs such as Bond Proceeds Management, Cash Flow Analysis and Investment Policy Review available to all Participants
- IPRIME was designed, sponsored and is governed by a board of local government officials. Lake County Treasurer, Holly Kim, currently sits on the IPRIME board and represents a voice for Illinois Counties

Courtney Soesbe, Vice President, Sales Relationship Management said, "We are thrilled to have this early support of so many counties and are energized that we are continuing to service counties, municipalities, and special districts across Illinois. With the guidance and oversight of the IPRIME Board of Directors, our services continually evolve to best meet the needs of Illinois counties. We are proud of the work our team is doing and we are incredibly grateful to our clients for their confidence in us."

With a strong understanding of their clients' needs, PMA/IPRIME has established itself as a leading provider of integrated financial solutions. Their performance is built around the safety, liquidity and yield that County officials depend on and expect, and we are excited to bring these values to ISACo's Participants.

**Join us as we work to bring comprehensive services to Illinois counties!**

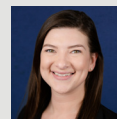
For more information on the program and how to become an IPRIME Participant, please contact **Courtney Soesbe** or **Lisa Nusko**.

Please visit the IPRIME website to learn more at [www.iprimetrust.org](http://www.iprimetrust.org).



### Courtney Soesbe

Vice President,  
Senior Relationship Officer  
PMA Financial Network, LLC  
630.657.6421  
[csoesbe@pmanetwork.com](mailto:csoesbe@pmanetwork.com)



### Lisa Nusko

Associate Vice President,  
Investment Services  
PMA Financial Network, LLC  
630.657.6527  
[lpallock@pmanetwork.com](mailto:lpallock@pmanetwork.com)